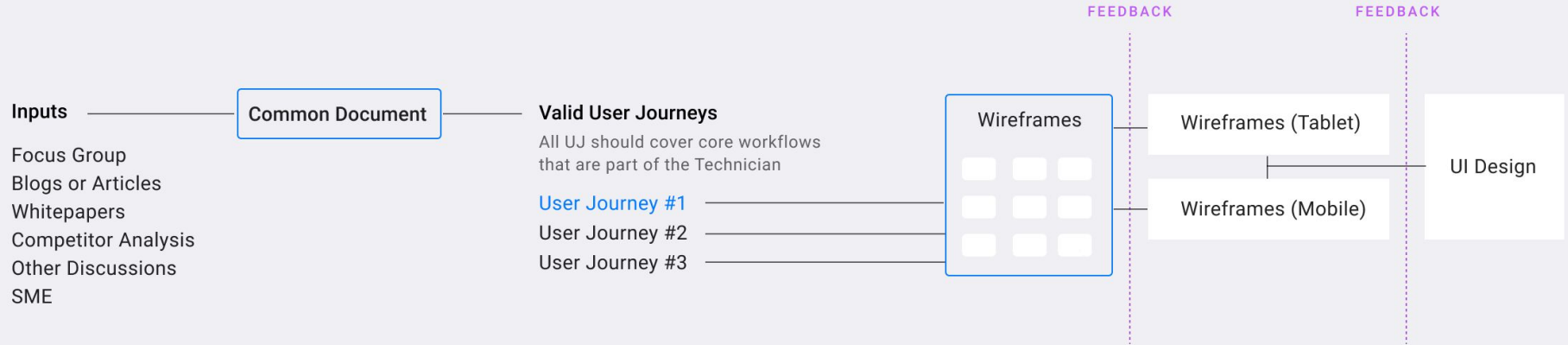


Planning

Technician View



Insights

1. Logging of time is very crucial as the payroll is dependent on it. Should be easy to view and manage.
2. Location (discoverability) also plays an important role for a Technician. (both indoor and outdoor).
3. Any requirement (components, permits...) that are necessary before the actual work start should be easily accessible.
4. Show detail only when required (based on context, on on user demand).
5. Make it Personal. A bit configurable for the technician on the UI and save it. This helps for his to a good workflow each day.

User Journey #1

1. Kevin wakes up and get ready for work.
2. Kevin carries his personal mobile, wallet and drives to the back office (which is where he is employed)

Time 5:30 am



3. Kevin picks up the Tablet from the locker room and logs in his account.

Time 5:45 am

Login

4. Kevin views all the WO while attending the debriefing along with supervisor and other colleagues.

Time 5:50 am - 6:10 am

Online

List View

Calendar View

Map View

Total Time logged

0 hour 0 minutes

Required

27

4

SORT BY

Priority (High to Low)

Schedule

Distance (near to far)

FILTER & SORT

Showing 23 Work Orders

123456

High

x1

2 hour 30 minutes

Change and Inspection of the Oil pump on the main line.

ToDo

Operation no.	Description	Estimated Time	Timer
OP-22344	Inspect the oil pump	30 m	
OP-22367	Check on the main line for the Pressure Reading	10 m	
OP-22682	Change the pump to the new one	1 h 30 m	
OP-22383	Inspect the new pump and enter the new readings	20m	

123459

Med.

x1

30 minutes

Inspection of the CNC machine spindle

ToDo

Operation no.	Description	Estimated Time	Timer
OP-22232	Disconnect the CNC machine from the Main	10 m	
OP-22298	Inspect the CNC machine spindle for any failure and note the CNC full levels	20 m	

Goal

To get a brief on the work assigned for today, see what all is required and leave for picking the components (if needed) to start work.

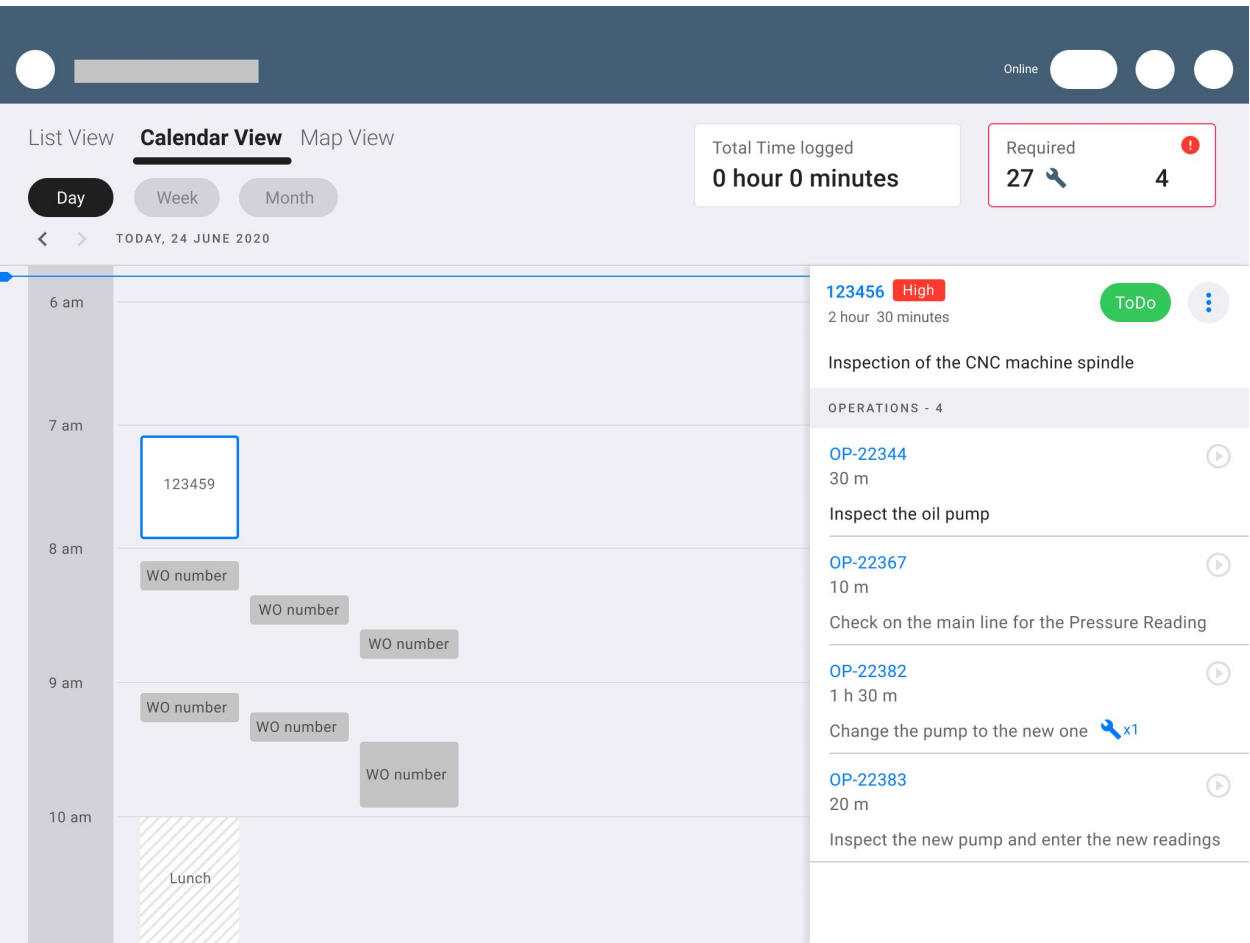
Tasks

- 1. View all the WO that are assigned to me or shared with me.

Notifications,

4. Kevin views all the WO while attending the debriefing along with supervisor and other colleagues.

Time 5:50 am - 6:10 am



Goal

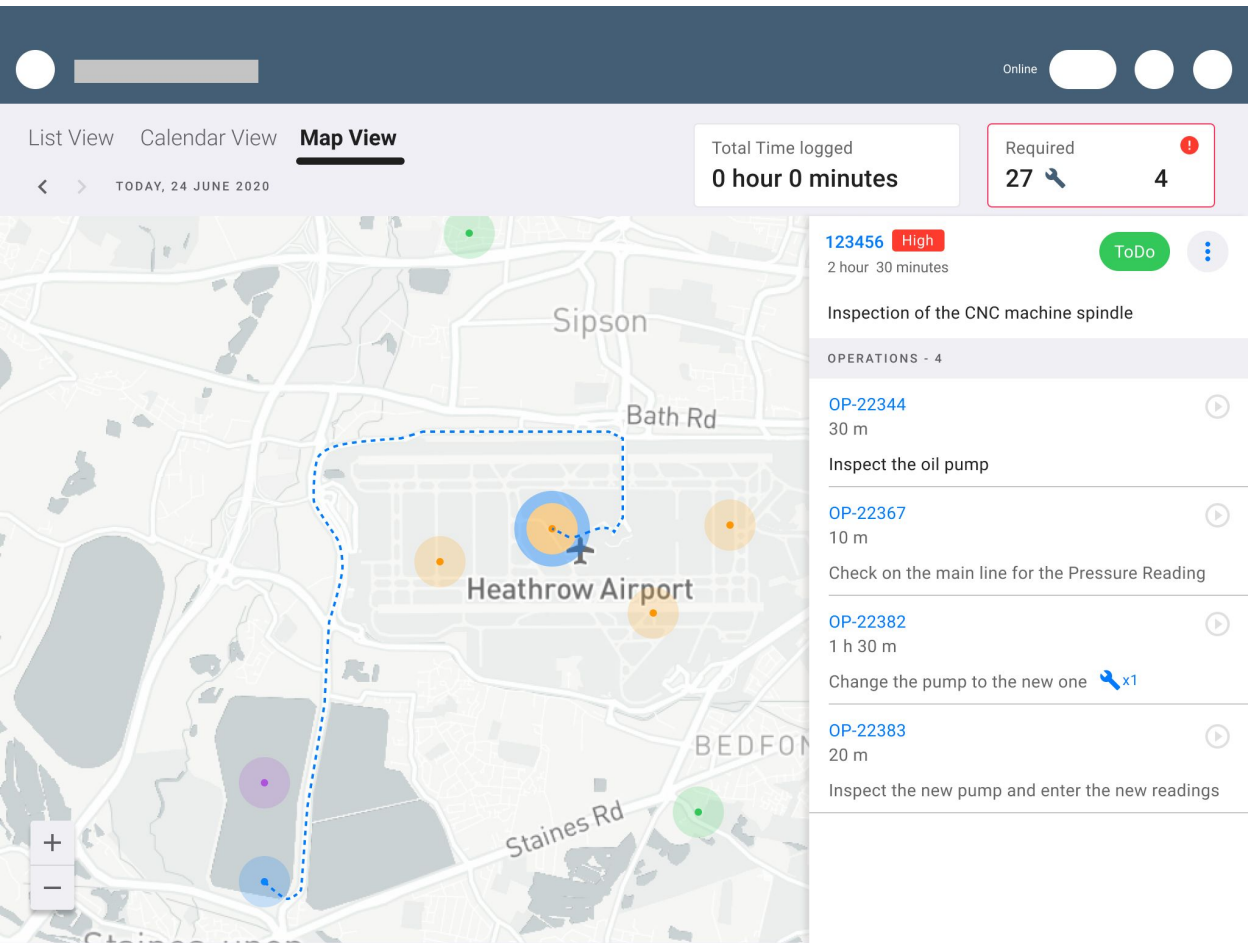
To get a brief on the work assigned for today, see what all is required and leave for picking the components (if needed) to start work.

Tasks

2. Viewing WO that are scheduled today as per supervisor.

4. Kevin views all the WO while attending the debriefing along with supervisor and other colleagues.

Time 5:50 am - 6:10 am



Goal

To get a brief on the work assigned for today, see what all is required and leave for picking the components (if needed) to start work.

Tasks

3. He also checks the map to see where all the WO are located.

4. Kevin views all the requirements.

Time 5:50 am - 6:10 am

Online

← Requirements

ADD NEW COMPONENT

COMPONENTS

PERMITS

To be Picked (27)

Picked

Consumed

Component No.	Component Name	Required Quantity	Availability in Warehouse	Picked
OB-2323	Ball bearnings SGF-183277	5 units	Available 450	<div>Yes</div>
	Operation #3 description (WO-2213)			x4
	Operation #2 description (WO-22123)			x1
OB-2393	M8 50mm screw	40 units	Available 20,000	<div>Yes</div>
	Operation #3 description (WO-2213)			x4
	Operation #2 description (WO-22123)			x8
	Operation #2 description (WO-22292)			x2
	Operation #2 description (WO-22157)			x8
	Operation #2 description (WO-22135)			x2
	Operation #2 description (WO-22185)			x16
OB-2393	Motor Copper Bush 20mm rot...	6 units	Low Stock 2	
	Operation #4 description (WO-2213)			x6
OB-2343	Motor Coil winding 300m	1 unit	Out of Stock	
	Operation #5 description (WO-2213)			x1

WAREHOUSE

Office Depot
23 miles away
14, Heathrow Int Trading Estate, Green Ln, Hounslow TW4 6HB, United Kingdom

Goal

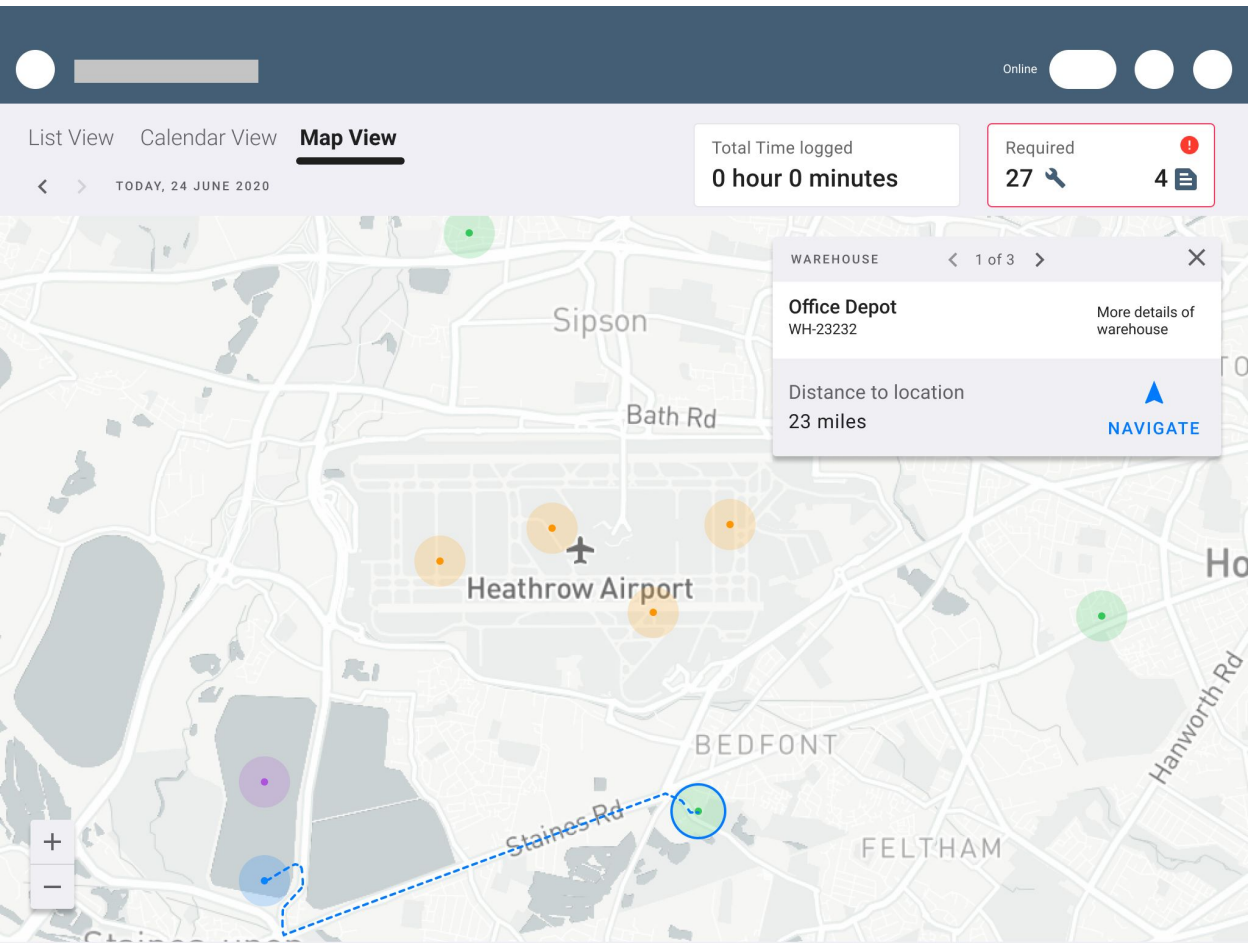
To get a brief on the work assigned for today, see what all is required and leave for picking the components (if needed) to start work.

Tasks

4. He checks all the component and permits before leaving to the warehouse.

4. Kevin checks the warehouse and decides to navigates.

Time 5:50 am - 6:10 am



Goal

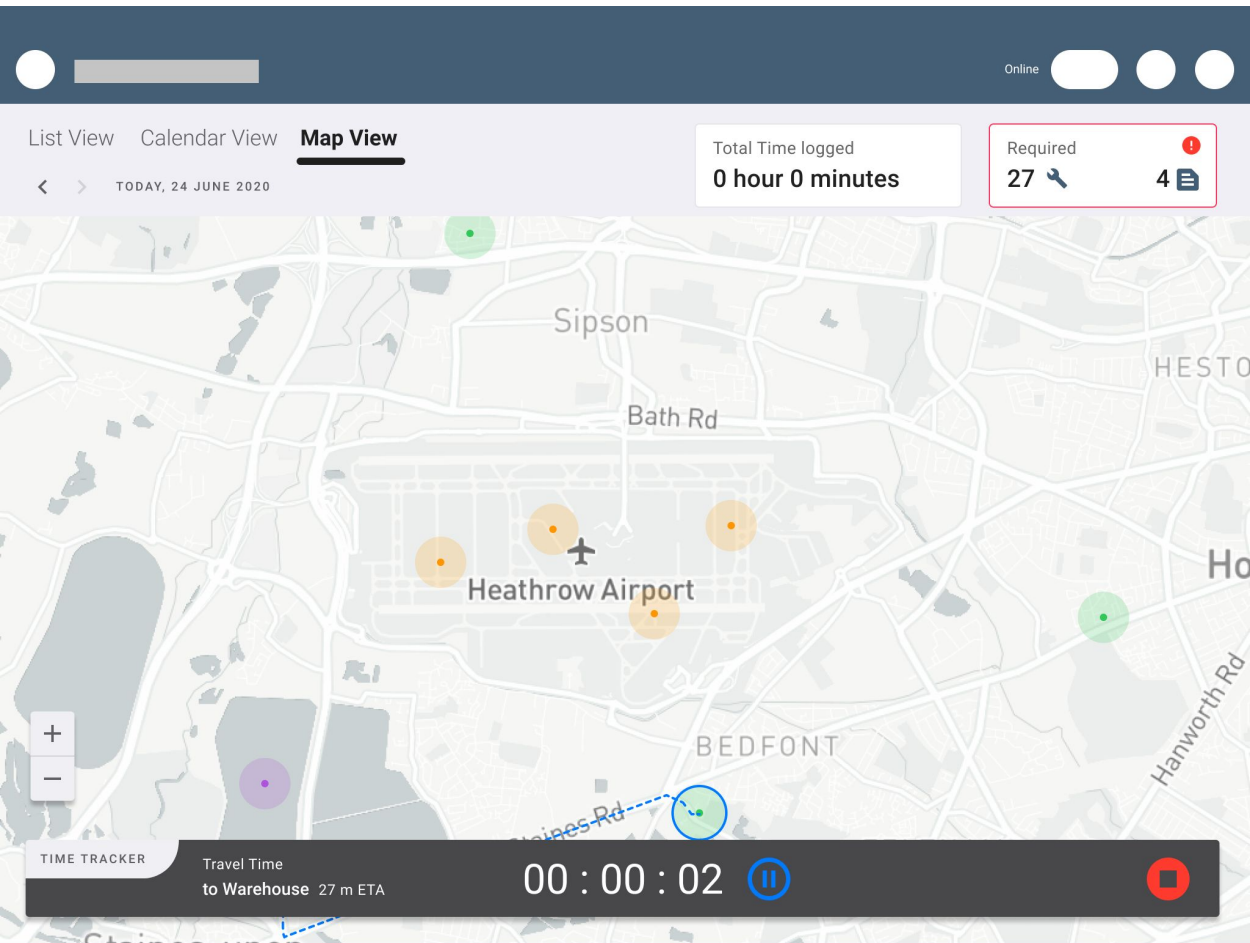
To get a brief on the work assigned for today, see what all is required and leave for picking the components (if needed) to start work.

Tasks

5. He checks the warehouse location

4. Kevin starts to travel towards warehouse

Time 6:15 am

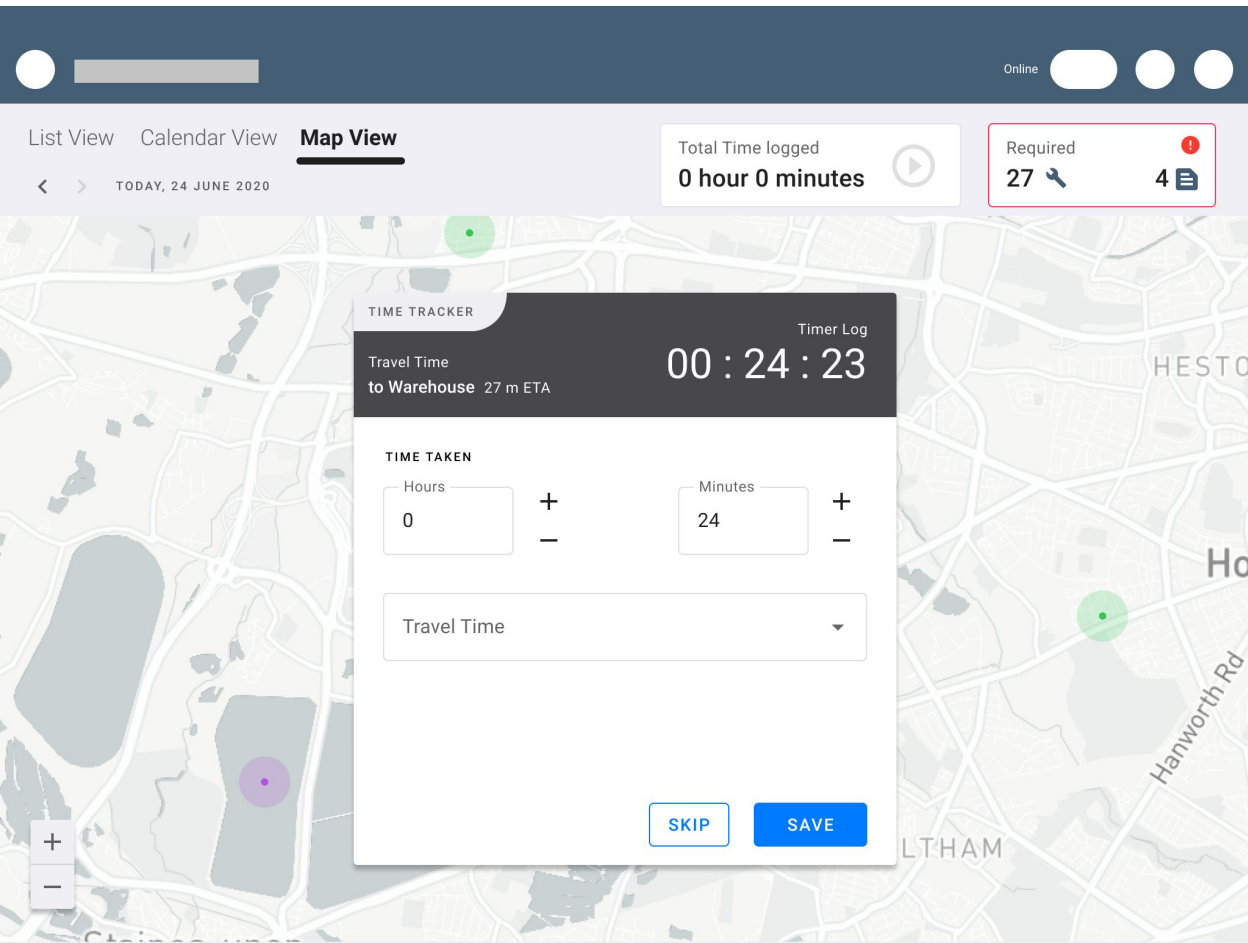


Goal
To reach warehouse

- Tasks**
1. Kevin have to navigate and reach to warehouse.
 2. He has to log the time for the travel

4. Kevin reaches warehouse

Time 6:39 am



Goal
To pick components from the warehouse

- Tasks**
1. Log the travel time *

4. Kevin is logging if he has got all components.

Online

← Requirements

ADD NEW COMPONENT

COMPONENTS

PERMITS

🔍

🔿 FILTER & SORT

To be Picked (27)

Picked

Consumed

Component No.	Component Name	Required Quantity	Availability in Warehouse	Picked
OB-2323 ⓘ	Ball bearnings SGF-183277	5 units	✔ Available 450	Yes
	Operation #3 description (WO-2213)			x4
	Operation #2 description (WO-22123)			x1
OB-2393	M8 50mm screw	40 units	✔ Available 20,000	Yes
	Operation #3 description (WO-2213)			x4
	Operation #2 description (WO-22123)			x8
	Operation #2 description (WO-22292)			x2
	Operation #2 description (WO-22157)			x8
	Operation #2 description (WO-22135)			x2
	Operation #2 description (WO-22185)			x16
OB-2393	Motor Copper Bush 20mm rot...	6 units	⚠ Low Stock 2	
	Operation #4 description (WO-2213)			x6
OB-2343	Motor Coil winding 300m	1 unit	⚠ Out of Stock	
	Operation #5 description (WO-2213)			x1

← WAREHOUSE →

Office Depot

0 miles away

14, Heathrow Int Trading Estate, Green Ln, Hounslow TW4 6HB, United Kingdom

Goal
To pick components from the warehouse

Tasks
2. Marks the components that he has got as picked.

4. Kevin has picked all components and now have to drive to Field location

Online

← Requirements

ADD NEW COMPONENT

COMPONENTS

PERMITS

FILTER & SORT

Picked (27)

Consumed

Component No.	Component Name	Quantity
OB-2323	Ball bearnings SGF-183277	5 units
	Operation #3 description (WO-2213)	x4
	Operation #2 description (WO-22123)	x1
OB-2393	M8 50mm screw	40 units
	Operation #3 description (WO-2213)	x4
	Operation #2 description (WO-22123)	x8
	Operation #2 description (WO-22292)	x2
	Operation #2 description (WO-22157)	x8
	Operation #2 description (WO-22135)	x2
	Operation #2 description (WO-22185)	x16
OB-2393	Motor Copper Bush 20mm rot...	6 units
	Operation #4 description (WO-2213)	x6
OB-2343	Motor Coil winding 300m	1 unit
	Operation #5 description (WO-2213)	x1

WAREHOUSE

Office Depot

0 miles away

14, Heathrow Int Trading Estate, Green Ln, Hounslow TW4 6HB, United Kingdom

Goal
To pick components from the warehouse

Tasks
3. Picked all the components

4. Kevin view the upcoming Work Order scheduled on the calender.

Online

List View

Calendar View

Map View

Day

Week

Month

<

>

TODAY, 24 JUNE 2020

Total Time logged

0 hour 24 minutes

Required

27

4

6 am

123456 High

2 hour 30 minutes

ToDo

Inspection of the CNC machine spindle

OPERATIONS - 4

OP-22344

30 m

Inspect the oil pump

OP-22367

10 m

Check on the main line for the Pressure Reading

OP-22382

1 h 30 m

Change the pump to the new one

x1

OP-22383

20 m

Inspect the new pump and enter the new readings

7 am

123459

8 am

WO number

WO number

WO number

9 am

WO number

WO number

WO number

10 am

Lunch

4. Kevin view the upcoming Work Order scheduled on the map.

Online

List View

Calendar View

Map View

<

>

TODAY, 24 JUNE 2020

Total Time logged

0 hour 24 minutes

Required

27

4



123456

High

2 hour 30 minutes

ToDo

Inspection of the CNC machine spindle

OPERATIONS - 4

OP-22344

30 m

Inspect the oil pump

OP-22367

10 m

Check on the main line for the Pressure Reading

OP-22382

1 h 30 m

Change the pump to the new one

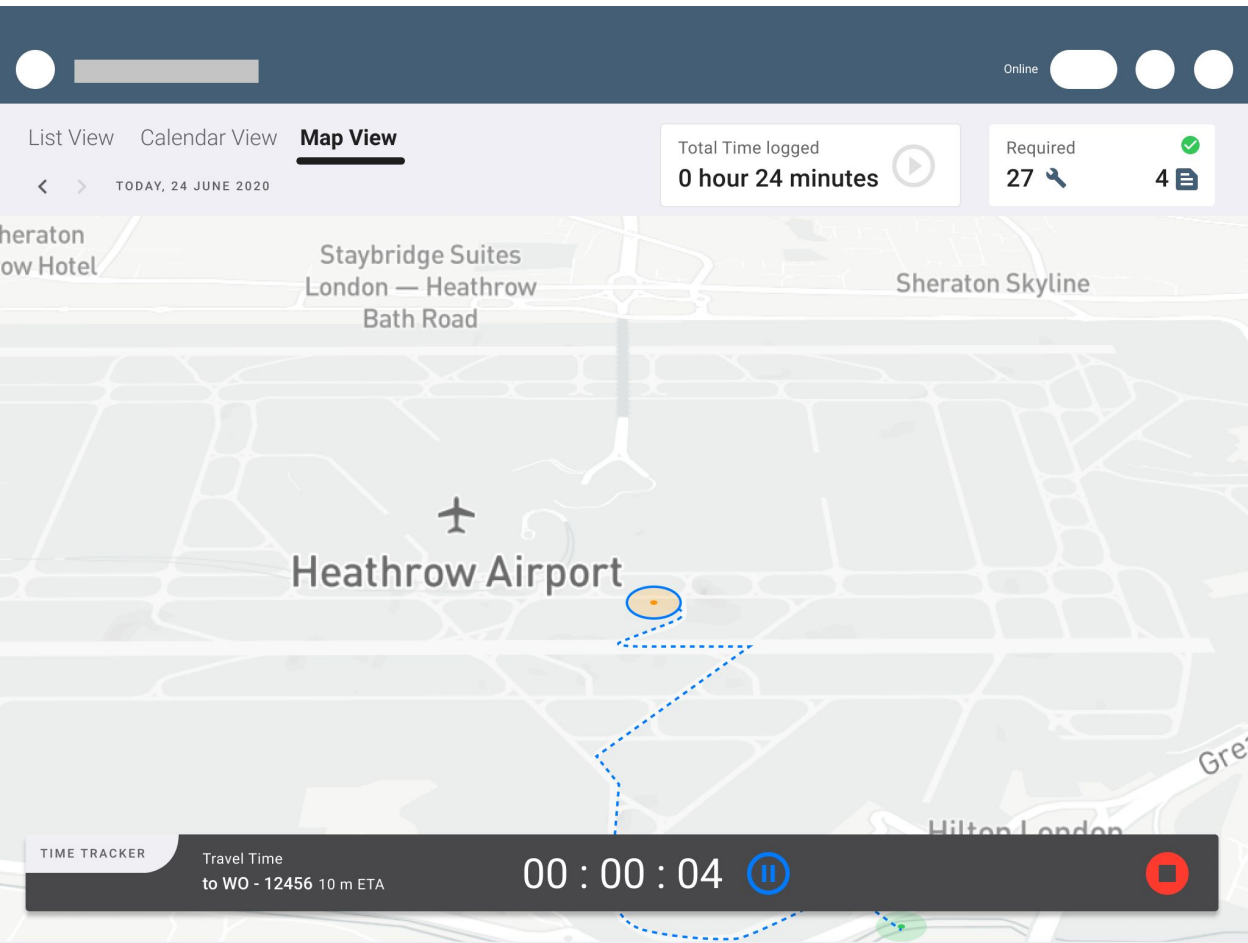
x1

OP-22383

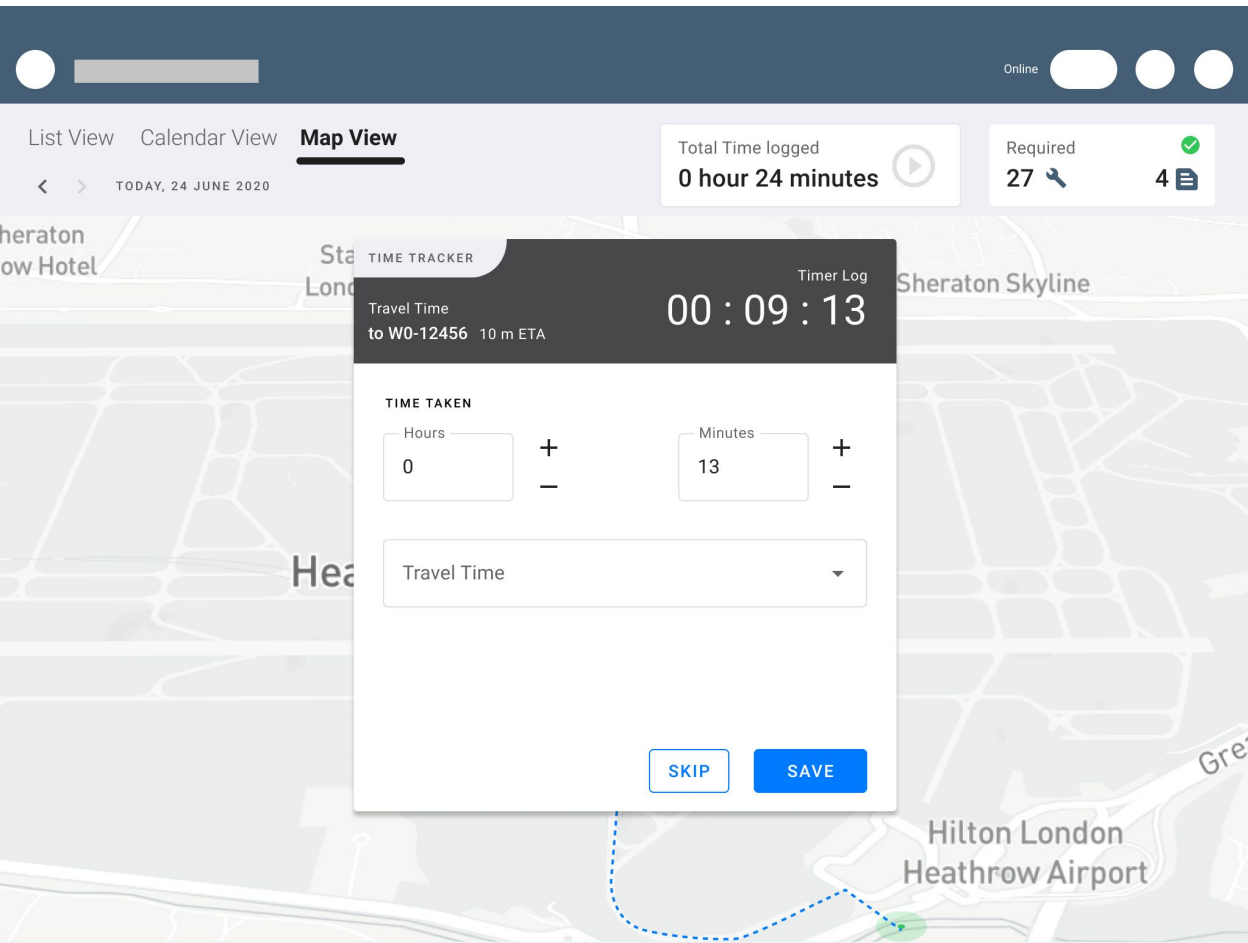
20 m

Inspect the new pump and enter the new readings

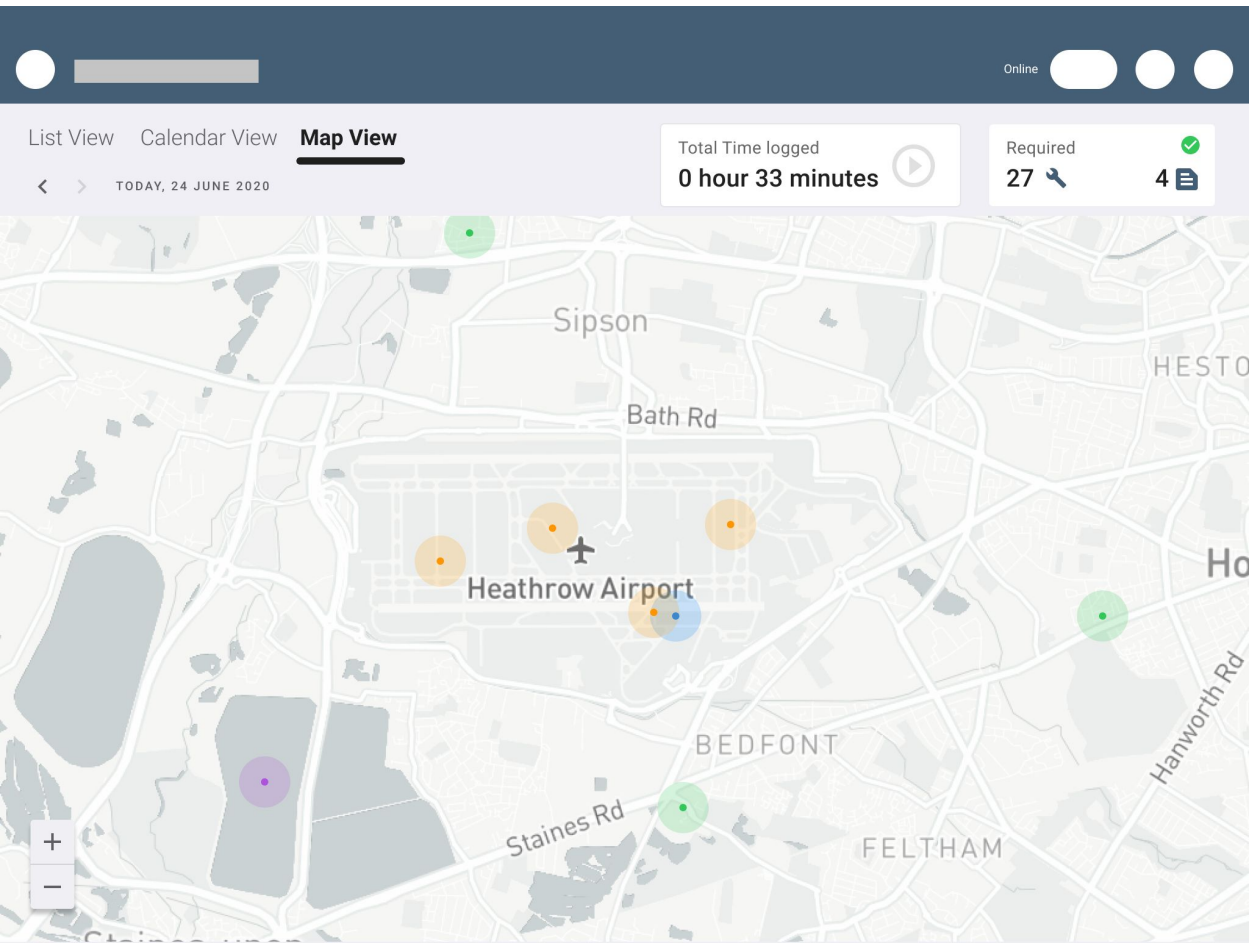
4. Kevin drives to Field location



Kevin arrives at Field location (WO-12456) and logs the time.



Time logged. Kevin is at Field location (WO-12456). He has to start the day's first WO.



Kevin is at Field location (WO-12456). He has to start the day's first WO. He views the Work Order.

Online

List View

Calendar View

Map View

Day

Week

Month

<

>

TODAY, 24 JUNE 2020

6 am

7 am

8 am

123459

WO number

WO number

WO number

9 am

WO number

WO number

WO number

10 am

Lunch

123456

High

2 hour 30 minutes

ToDo

Inspection of the CNC machine spindle

OPERATIONS - 4

OP-22344

30 m

Inspect the oil pump


OP-22367

10 m

Check on the main line for the Pressure Reading

OP-22382

1 h 30 m

Change the pump to the new one  x1

OP-22383

20 m

Inspect the new pump and enter the new readings

Kevin views the Work Order (WO-12456). He starts with first operation.

Online

←

WO - 12456

Change and Inspection of the Oil pump on the main line.

High

estimated 2h 30m

ToDo

OPERATIONS

COMPONENTS

PERMITS

FILTER & SORT

OP-22344

Inspect the oil pump

Estimated Time

30 m

Instructions for the operation

Forms

Attachments

OP-22367

Inspect the oil pump

Estimated Time

10 m

Instructions for the operation

Work Order Details sections
(on SAP Asset Manager)

- Location
- Operations - ✓
- Equipment
- Functional Location
- Notification
- Parts - ✓
- Documents
- Notes
- Related Notifications
- Object List

Work Order Details sections
(on mWO)

- Header
- Signature
- Maps
- Electrical Service
- Operations - ✓
- Components
- Inspection Checklist
- Forms

Online

←

WO - 12456

Change and Inspection of the Oil pump on the main line.

High

estimated 2h 30m

In Progress

OPERATIONS

COMPONENTS

PERMITS

FILTER & SORT

OP-22344

Estimated Time

Inspect the oil pump30 m

Instructions for the operation

Forms

Attachments

OP-22347

Estimated Time

TIME TRACKER

Wrench Time

WO - 12456

00 : 00 : 04

Instructions for the operation

Online

←

WO - 12456

Change and Inspection of the Oil pump on the main line.

High

estimated 2h 30m

OPERATIONS

COMPONENT

OP-22344

Inspect the oil pump

Estimated Time

30 m

Instructions for the operation

Forms

Attachments

OP-22367

Inspect the oil pump

Estimated Time

10 m

Instructions for the operation

In Progress

TIME TRACKER

Timer Log

Wrench Time to OP-22344 30 m ETA

00 : 28 : 13

TIME TAKEN

Hours

0

+

Minutes

28

+

Wrench Time

▼

SKIP

SAVE

Online

←

WO - 12456

Change and Inspection of the Oil pump on the main line.

High

estimated 2h 30m | 28 m logged

In Progress

OPERATIONS

COMPONENTS

PERMITS

OP-22344

Completed

Inspect the oil pump

Estimated Time

30 m

Time Logged

28 m 12 sec

OP-22367

Inspect the oil pump

Estimated Time

10 m

Instructions for the operation

Forms

OP-223682

Estimated Time

WO-12456 completed, kevin is taking a tea break

Online

←

WO - 12456

Completed

Change and Inspection of the Oil pump on the main line.

High

estimated 2h 30m | completed in 2h 20m 24s

OPERATIONS

COMPONENTS

PERMITS

OP-22344

Completed

Inspect the oil pump

Estimated Time

30 m

Time Logged

28 min 12 sec

OP-22367

Completed

Check on the main line for the Pressure Reading

Estimated Time

10 m

Time Logged

12 min

OP-22682

Completed

x1

Change the pump to the new one

Estimated Time

1h 30 m

Time Logged

1 hour 20 min

OP-22383

Completed

Inspect the new pump and enter the new readings

Estimated Time

20 m

Time Logged

20 min 12 sec

UPCOMING

123459

Med.

30 minutes

Inspection of the CNC machine spindle

DISMISS (5)

VIEW

Kevin is focussing on the next work order scheduled WO-123459

Online

List View

Calendar View

Map View

Day

Week

Month

<

>

TODAY, 24 JUNE 2020

6 am

7 am

123459

8 am

123459

9 am

WO number

WO number

WO number

10 am

Lunch

123459

Med.

30 minutes

ToDo

Inspection of the CNC machine spindle

OPERATIONS - 2

OP-22232

10 m

Disconnect the CNC machine from the Main

OP-22298

10 m

Inspect the CNC machine spindle for any failure and note the CNC fuel levels

Kevin locates WO-123459 via the indoor map.

Online

List View

Calendar View

Map View

<

>

TODAY, 24 JUNE 2020

Total Time logged

2 hour 24 minutes

Required

27

4

Way

Condor Way

Wairside Rd Tunnel

How Cargo Tunnel

123459

Med.

30 minutes

ToDo

Inspection of the CNC machine spindle

OPERATIONS - 2

OP-22232

10 m

Disconnect the CNC machine from the Main

OP-22298

10 m

Inspect the CNC machine spindle for any failure and note the CNC fuil levels

Now the same cycles repeat were in he start the each operation in the Work Order and closes it.

Kevin closes all Work Orders

Online

←

WO - 12936

Change and Inspection of the Oil pump on the main line.

High

estimated 2h 30m | completed in 2h 20m 24s

Completed

OPERATIONS

COMPONENTS

PERMITS

OP-22344

Completed

Inspect the oil pump

OP-22367

Completed

Check on the main line for the Press

OP-22682

Completed

Change the pump to the new one

OP-22383

Completed

Inspect the new pump and enter the

OP-22383

Completed

Inspect the new pump and enter the new readings

Time Logged

28 min 12 sec

Time Logged

12 min

Time Logged

1 hour 20 min

Time Logged

20 min 12 sec

Time Logged

20 min 12 sec

Great !

All Work orders Completed

Time Estimated

7 hours

Total Time Logged

6 hours 23 min

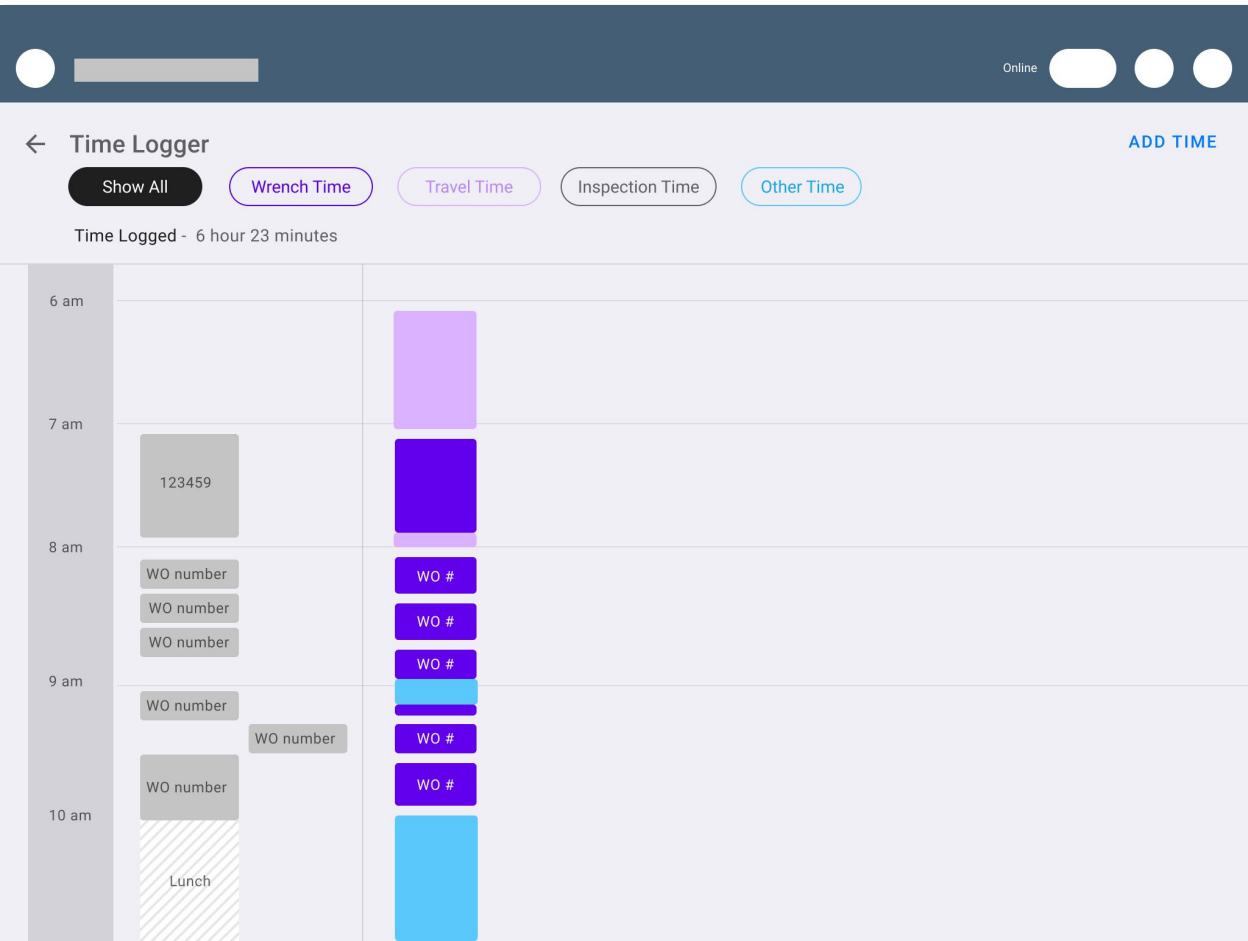
Component used

27 / 27

CLOSE

VIEW TIME LOG

Kevin view the time logs against the scheduled time. Adjusts or adds new time on the logger.



Adding time in Upwork

Add Time ✕

Assigned to: Anshul Singh (Admin) ✕ | v | Hourly Rate: \$ 0.00

☐ Include the hourly rate in the total cost
This will add a new cost item to total cost spent on the Work Order.

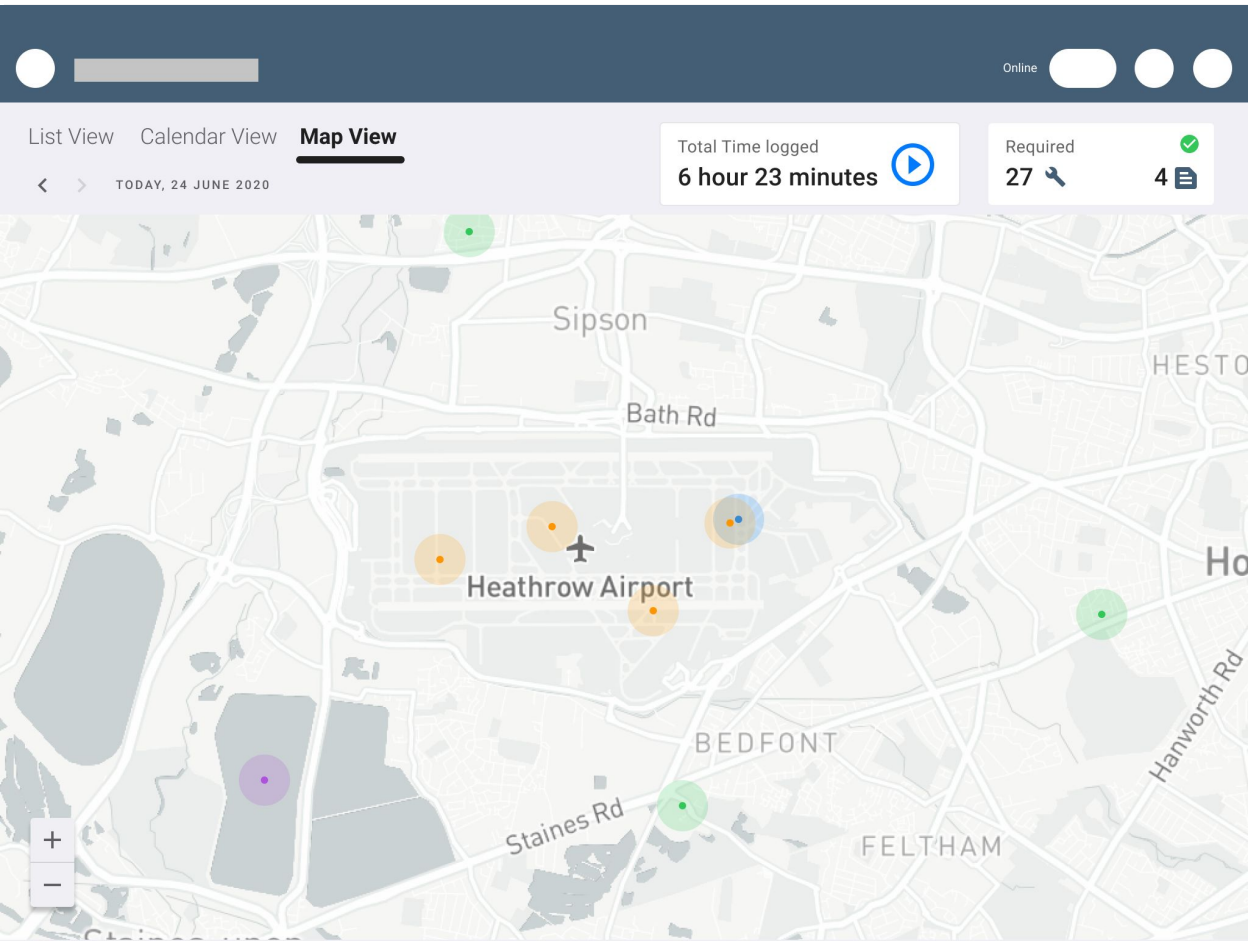
Work Started at: Jun 11th 2020, 3:10 pm | 📅 | ⌚ | Duration: 0 hours 0 minutes

☒ Include this time in the total time
This will add the duration to the total time spent on the Work Order.

Timer Category: Other Time ✕ | ^

- Vendor Time
- Wrench Time
- Other Time
- Drive Time
- Inspection Time

Kevin complete the logging. Now he views the map.



Kevin has to go back now back to the office. He views the location.

Online

List View

Calendar View

Map View

<

>

TODAY, 24 JUNE 2020

Total Time logged

6 hour 23 minutes

Required

27

4

OFFICE

Dave Heavy Works

OF-23232

More details on Office

Distance to location

42 miles

NAVIGATE

Sipson

Bath Rd

Heathrow Airport

BEDFONT

FELTHAM

Staines Rd

Hanworth Rd

Kevin is now leaving for office.

Online

List ViewCalendar View

Map View

<>TODAY, 24 JUNE 2020

Total Time logged

6 hour 23 minutes

Required

27

4

heratonow Hotel

Staybridge Suites
London — Heathrow
Bath Road

Sheraton Skyline

Heathrow Airport

Hilton London

Gre

TIME TRACKER

Travel Time
to Dave Heavy works 45 m ETA

00 : 00 : 04

Kevin reached the office. He can save this travel time.

Online

List View

Calendar View

Map View

<

>

TODAY, 24 JUNE 2020

Total Time logged

6 hour 24 minutes

Required

27

4

TIME TRACKER

Timer Log

Travel Time

to Dave heavy Works 45 m ETA

00 : 59 : 02

TIME TAKEN

Hours

0

+

-

Minutes

59

+

-

Travel Time

SKIP

SAVE

heraton

ow Hotel

Sta

Lon

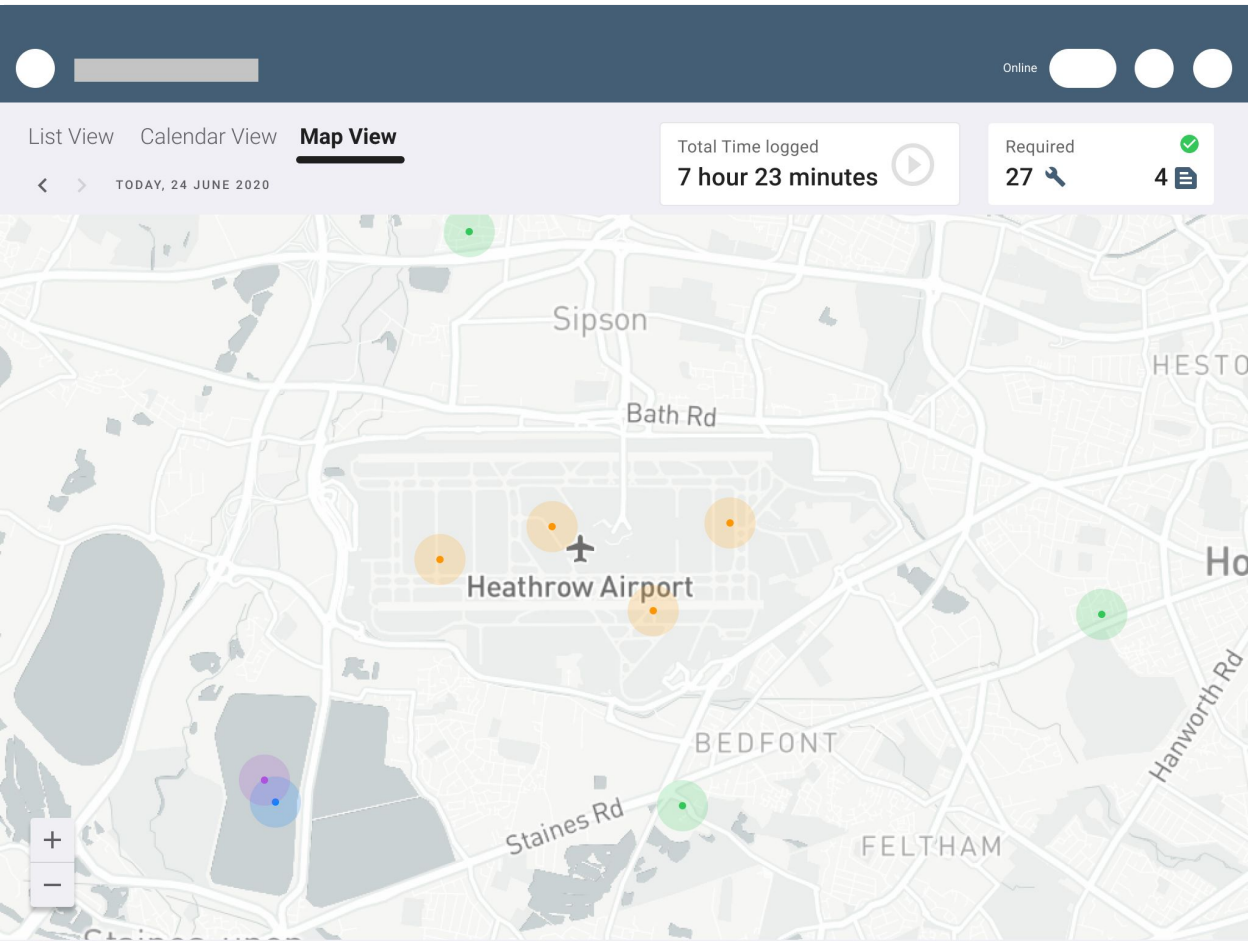
Sheraton Skyline

Gre

Hilton London

Heathrow Airport

Kevin logs the time and he is done for the day.



Kevin logs out and keep back the tablet in his locker room. Leaves for home.

Login

You have logged out successfully !

Login

You have logged out successfully !

FILTER

Priority

High

Medium

Low

Only me

Shared Work Orders

WO Status

ToDo

In Progress

On Hold

Completed

Favourite

Date

SORT

Priority

Distance

High to Low

Low to High

Highest to Lowest

Lowest to Highest

OTHER OPTIONS

Show Operations